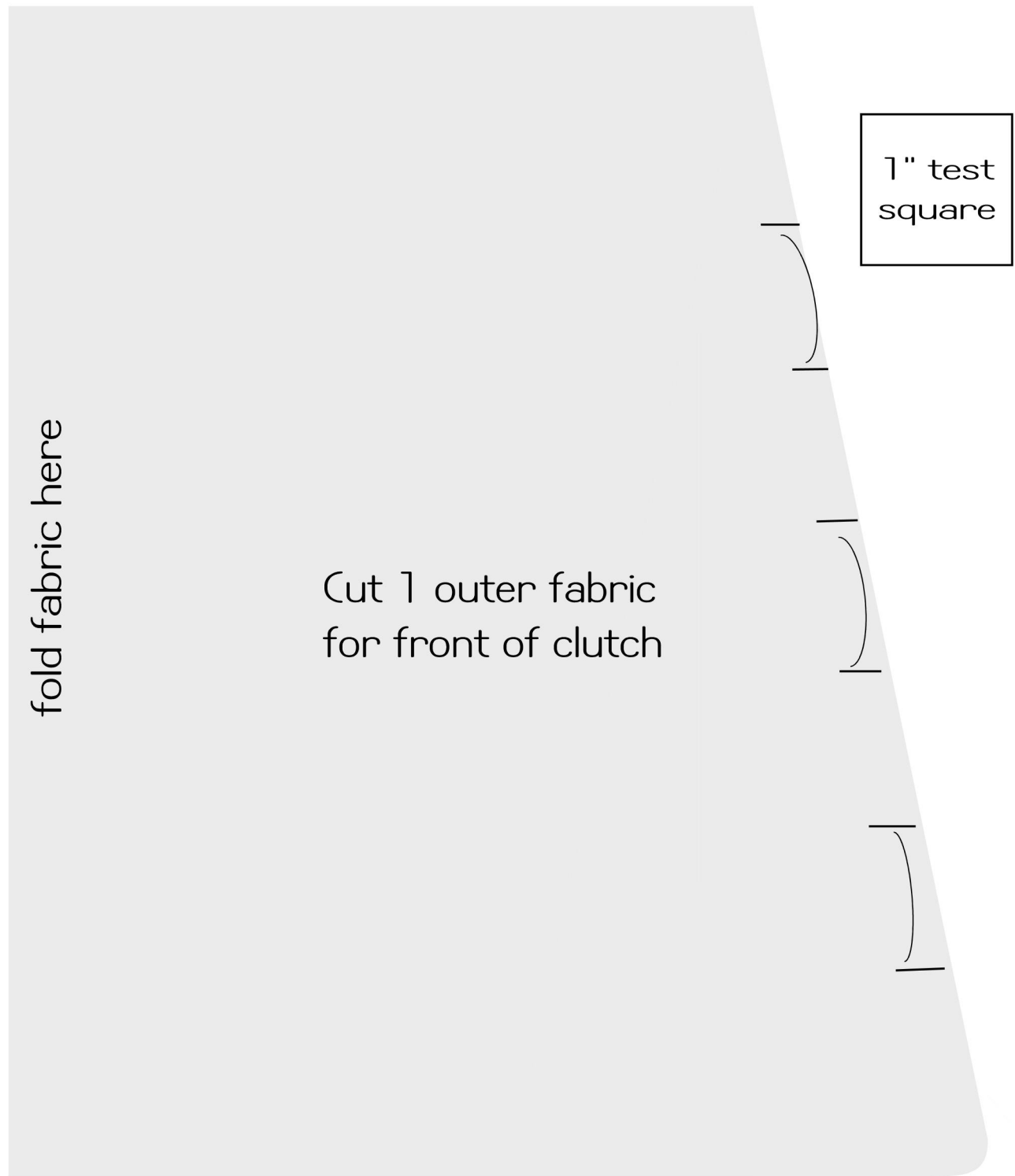


The Pleated Pouch



Band: cut 2 contrasting fabric

1" test
square

fold fabric here

Cut 1 outer fabric
for front of clutch

The Pleated Pouch

circle used to round
edges if desired


The Pleated Pouch




The Lemon Squeezy Clutch



interfacing for pocket
cut 1



1" test
square



pocket
cut 1 outer fabric